

Acta Crystallographica Section E

## Structure Reports

Online

ISSN 1600-5368

## 3-(1,3-Dithiolan-2-ylidene)-1-(4-methoxyphenyl)pyridine-2,4(1H,3H)-dione

Yan-Chun Ma<sup>a\*</sup> and Jin-Long Song<sup>b</sup><sup>a</sup>Educational Institute of Jilin Province, Changchun 130022, People's Republic of China, and <sup>b</sup>Jilin Province Product Quality Supervision Test Institute, Changchun 130022, People's Republic of China

Correspondence e-mail: yanchunma999@163.com

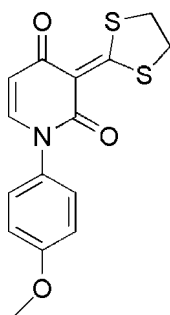
Received 11 August 2011; accepted 15 August 2011

Key indicators: single-crystal X-ray study;  $T = 293$  K; mean  $\sigma(\text{C}-\text{C}) = 0.004$  Å;  $R$  factor = 0.045;  $wR$  factor = 0.121; data-to-parameter ratio = 15.3.

In the title compound,  $\text{C}_{15}\text{H}_{13}\text{NO}_3\text{S}_2$ , the dithiolane ring adopts a twisted conformation. The molecule exhibits a V-shaped conformation, with a dihedral angle of  $79.05(7)^\circ$  between the benzene ring and the pyridine ring. In the crystal,  $\text{C}-\text{H}\cdots\text{O}$  interactions are observed.

## Related literature

For the synthesis, see: Li *et al.* (2008). For background to *N*-substituted pyridine compounds and their potential use in medicinal chemistry, see: Kim *et al.* (2008); Zhu *et al.* (2006)



## Experimental

## Crystal data

 $\text{C}_{15}\text{H}_{13}\text{NO}_3\text{S}_2$  $M_r = 319.40$ 

Monoclinic,  $P2_1/n$   
 $a = 5.322(2)$  Å  
 $b = 27.521(11)$  Å  
 $c = 10.065(4)$  Å  
 $\beta = 100.831(5)^\circ$   
 $V = 1448.0(10)$  Å<sup>3</sup>

$Z = 4$   
 Mo  $K\alpha$  radiation  
 $\mu = 0.38$  mm<sup>-1</sup>  
 $T = 293$  K  
 $0.35 \times 0.29 \times 0.28$  mm

## Data collection

Bruker APEXII CCD  
 diffractometer  
 Absorption correction: multi-scan  
 (SADABS; Bruker, 2002)  
 $T_{\min} = 0.892$ ,  $T_{\max} = 0.912$

12346 measured reflections  
 2905 independent reflections  
 1973 reflections with  $I > 2\sigma(I)$   
 $R_{\text{int}} = 0.053$

## Refinement

$R[F^2 > 2\sigma(F^2)] = 0.045$   
 $wR(F^2) = 0.121$   
 $S = 1.08$   
 2905 reflections

190 parameters  
 H-atom parameters constrained  
 $\Delta\rho_{\text{max}} = 0.43$  e Å<sup>-3</sup>  
 $\Delta\rho_{\text{min}} = -0.30$  e Å<sup>-3</sup>

Table 1

Hydrogen-bond geometry (Å, °).

$D-H\cdots A$	$D-H$	$H\cdots A$	$D\cdots A$	$D-H\cdots A$
$\text{C8}-\text{H8}\cdots\text{O2}^i$	0.93	2.42	3.259 (3)	150

Symmetry code: (i)  $x + \frac{1}{2}, -y + \frac{1}{2}, z - \frac{1}{2}$ .

Data collection: APEX2 (Bruker, 2002); cell refinement: SAINT (Bruker, 2002); data reduction: SAINT; program(s) used to solve structure: SHELXS97 (Sheldrick, 2008); program(s) used to refine structure: SHELXL97 (Sheldrick, 2008); molecular graphics: SHELXTL (Sheldrick, 2008); software used to prepare material for publication: SHELXTL.

The authors thank the Educational Institute of Jilin Province for supporting this work.

Supplementary data and figures for this paper are available from the IUCr electronic archives (Reference: FF2024).

## References

- Bruker (2002). APEX2, SAINT and SADABS. Bruker AXS Inc., Madison, Wisconsin, USA.
- Kim, K. S., Zhang, L., Schmidt, R., Cai, Z. W., Wei, D., Williams, D. K., Lombardo, L. J., Trainor, G. L., Xie, D., Zhang, Y., An, Y., Sack, J. S., Tokarski, J. S., Darienzo, C., Kamath, A., Marathe, P., Zhang, Y., Lippy, J., Jeyaseelan, R. S., Wautlet, B., Henley, B., Gullo-Brown, J., Manne, V., Hunt, J. T., Fargnoli, J. & Borzilleri, R. M. (2008). *J. Med. Chem.* **51**, 5330–5341.
- Li, Y.-H., Li, W.-L., Zhang, R., Zhou, Y. & Dong, D.-W. (2008). *Synthesis*, **21**, 3411–3414.
- Sheldrick, G. M. (2008). *Acta Cryst.* **A64**, 112–122.
- Zhu, T., Yan, Z., Chucholowski, A., Webb, T. R. & Li, R.-S. (2006). *J. Comb. Chem.* **8**, 401–409.

**supplementary materials**

*Acta Cryst.* (2011). E67, o2433 [ doi:10.1107/S1600536811033009 ]

### 3-(1,3-Dithiolan-2-ylidene)-1-(4-methoxyphenyl)pyridine-2,4(1*H*,3*H*)-dione

Y.-C. Ma and J.-L. Song

#### Comment

Among the richness of heterocyclic compounds, N-substituted pyridone compounds (Zhu *et al.*, 2006) have attracted an intense interest due to their potential for medicinal chemistry (Kim *et al.*, 2008). Recently, a large number of N-substituted pyridone compounds have been prepared (Li *et al.*, 2008). As a contribution to this field, the structure of the title crystal is presented here. The molecular structure of the title compound, together with the atom-numbering scheme, is illustrated in Fig.1. Selected bond lengths and angles are given in Table 1. The molecule exhibits a V-shaped conformation in the crystal with a dihedral angle of 79.05 (7)° between the benzene ring and the pyridine ring. The dithiolane ring has a twisted conformation.

#### Experimental

The title compound was synthesized according to the literature (Li *et al.*, 2008). It was dissolved in ethyl acetate at room temperature and hexane was added. The solution was kept at room temperature in a sealed flask for a few days to give single crystals suitable for single-crystal X-ray analysis.

#### Refinement

All H atoms bound to C atoms were generated geometrically and refined as riding atoms with C—H = 0.93 Å for aromatic H, 0.96 Å for CH<sub>3</sub> groups, 0.97 Å for CH<sub>2</sub> groups, and with  $U_{\text{iso}}(\text{H}) = 1.5U_{\text{eq}}(\text{C})$  for CH<sub>3</sub> groups and  $U_{\text{iso}}(\text{H}) = 1.2U_{\text{eq}}(\text{C})$  for all the other groups.

#### Figures

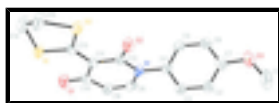


Fig. 1. Molecular structure of the title compound with displacement ellipsoids drawn at the 30% probability level for non-H atoms.

### 3-(1,3-Dithiolan-2-ylidene)-1-(4-methoxyphenyl)pyridine- 2,4(1*H*,3*H*)-dione

#### Crystal data

C<sub>15</sub>H<sub>13</sub>NO<sub>3</sub>S<sub>2</sub>

$M_r = 319.40$

Monoclinic,  $P2_1/n$

Hall symbol: -p 2yn

$a = 5.322(2) \text{ \AA}$

$b = 27.521(11) \text{ \AA}$

$Z = 4$

$F(000) = 664$

$D_x = 1.453 \text{ Mg m}^{-3}$

Mo  $K\alpha$  radiation,  $\lambda = 0.71073 \text{ \AA}$

$\theta = 2.7\text{--}27.1^\circ$

$\mu = 0.38 \text{ mm}^{-1}$

# supplementary materials

---

$c = 10.065$  (4) Å  
 $\beta = 100.831$  (5)°  
 $V = 1448.0$  (10) Å<sup>3</sup>

$T = 293$  K  
Block, yellow  
 $0.35 \times 0.29 \times 0.28$  mm

## Data collection

Bruker APEXII CCD diffractometer  
Radiation source: fine-focus sealed tube graphite  
 $\omega$  scans  
Absorption correction: multi-scan (SADABS; Bruker, 2002)  
 $T_{\min} = 0.892$ ,  $T_{\max} = 0.912$   
12346 measured reflections

2905 independent reflections  
1973 reflections with  $I > 2\sigma(I)$   
 $R_{\text{int}} = 0.053$   
 $\theta_{\max} = 26.2^\circ$ ,  $\theta_{\min} = 2.2^\circ$   
 $h = -6 \rightarrow 6$   
 $k = -34 \rightarrow 33$   
 $l = -12 \rightarrow 12$

## Refinement

Refinement on  $F^2$   
Least-squares matrix: full  
 $R[F^2 > 2\sigma(F^2)] = 0.045$   
 $wR(F^2) = 0.121$   
 $S = 1.08$   
2905 reflections  
190 parameters  
0 restraints

Primary atom site location: structure-invariant direct methods  
Secondary atom site location: difference Fourier map  
Hydrogen site location: inferred from neighbouring sites  
H-atom parameters constrained  
 $w = 1/[\sigma^2(F_o^2) + (0.0581P)^2]$   
where  $P = (F_o^2 + 2F_c^2)/3$   
 $(\Delta/\sigma)_{\max} < 0.001$   
 $\Delta\rho_{\max} = 0.43 \text{ e \AA}^{-3}$   
 $\Delta\rho_{\min} = -0.30 \text{ e \AA}^{-3}$

## Special details

**Geometry.** All esds (except the esd in the dihedral angle between two l.s. planes) are estimated using the full covariance matrix. The cell esds are taken into account individually in the estimation of esds in distances, angles and torsion angles; correlations between esds in cell parameters are only used when they are defined by crystal symmetry. An approximate (isotropic) treatment of cell esds is used for estimating esds involving l.s. planes.

**Refinement.** Refinement of  $F^2$  against ALL reflections. The weighted R-factor  $wR$  and goodness of fit  $S$  are based on  $F^2$ , conventional R-factors  $R$  are based on  $F$ , with  $F$  set to zero for negative  $F^2$ . The threshold expression of  $F^2 > 2\sigma(F^2)$  is used only for calculating R-factors(gt) etc. and is not relevant to the choice of reflections for refinement. R-factors based on  $F^2$  are statistically about twice as large as those based on  $F$ , and R-factors based on ALL data will be even larger.

## Fractional atomic coordinates and isotropic or equivalent isotropic displacement parameters ( $\text{\AA}^2$ )

	<i>x</i>	<i>y</i>	<i>z</i>	$U_{\text{iso}}^*/U_{\text{eq}}$
S2	0.24453 (13)	0.13081 (2)	1.20138 (7)	0.0510 (2)
S1	0.45027 (15)	0.05404 (2)	1.05151 (8)	0.0620 (3)
N1	0.6394 (4)	0.23410 (7)	0.9727 (2)	0.0462 (5)

O2	0.3943 (3)	0.21607 (6)	1.12752 (18)	0.0595 (5)
O1	0.7470 (4)	0.09067 (7)	0.89857 (19)	0.0670 (5)
O3	0.5220 (4)	0.43233 (7)	1.0589 (2)	0.0736 (6)
C13	0.4297 (4)	0.11562 (9)	1.0831 (2)	0.0418 (6)
C11	0.5545 (4)	0.14965 (8)	1.0179 (2)	0.0419 (6)
C4	0.6118 (5)	0.28548 (8)	0.9964 (2)	0.0452 (6)
C12	0.5218 (4)	0.20108 (8)	1.0456 (2)	0.0436 (6)
C5	0.3930 (5)	0.30960 (10)	0.9369 (3)	0.0586 (7)
H5	0.2618	0.2929	0.8811	0.070*
C6	0.3694 (5)	0.35832 (10)	0.9602 (3)	0.0629 (8)
H6	0.2219	0.3747	0.9197	0.075*
C3	0.8034 (5)	0.31005 (9)	1.0787 (2)	0.0516 (6)
H3	0.9504	0.2936	1.1193	0.062*
C7	0.5642 (5)	0.38348 (9)	1.0438 (3)	0.0528 (6)
C10	0.7144 (5)	0.13424 (10)	0.9219 (2)	0.0484 (6)
C8	0.7884 (5)	0.21885 (10)	0.8818 (2)	0.0522 (7)
H8	0.8649	0.2423	0.8362	0.063*
C9	0.8276 (5)	0.17249 (10)	0.8563 (3)	0.0525 (6)
H9	0.9309	0.1646	0.7944	0.063*
C2	0.7809 (5)	0.35902 (9)	1.1022 (3)	0.0566 (7)
H2	0.9130	0.3755	1.1578	0.068*
C14	0.2073 (6)	0.03558 (11)	1.1426 (4)	0.0849 (10)
H14A	0.0436	0.0341	1.0811	0.102*
H14B	0.2466	0.0034	1.1800	0.102*
C15	0.1914 (7)	0.06899 (10)	1.2493 (4)	0.0856 (11)
H15A	0.3178	0.0604	1.3284	0.103*
H15B	0.0236	0.0665	1.2733	0.103*
C1	0.7075 (8)	0.45886 (12)	1.1489 (4)	0.1129 (14)
H1A	0.6552	0.4922	1.1501	0.169*
H1B	0.8688	0.4570	1.1197	0.169*
H1C	0.7246	0.4454	1.2382	0.169*

*Atomic displacement parameters ( $\text{\AA}^2$ )*

	$U^{11}$	$U^{22}$	$U^{33}$	$U^{12}$	$U^{13}$	$U^{23}$
S2	0.0644 (4)	0.0431 (4)	0.0516 (4)	-0.0063 (3)	0.0267 (3)	-0.0052 (3)
S1	0.0783 (5)	0.0396 (4)	0.0762 (5)	0.0019 (3)	0.0355 (4)	-0.0043 (3)
N1	0.0534 (12)	0.0425 (12)	0.0455 (12)	-0.0073 (9)	0.0167 (10)	-0.0016 (9)
O2	0.0830 (13)	0.0423 (10)	0.0643 (12)	-0.0049 (9)	0.0424 (11)	-0.0071 (8)
O1	0.0835 (14)	0.0528 (12)	0.0735 (13)	0.0071 (10)	0.0375 (11)	-0.0083 (10)
O3	0.0977 (16)	0.0497 (12)	0.0752 (14)	0.0139 (11)	0.0208 (12)	0.0030 (10)
C13	0.0456 (14)	0.0412 (13)	0.0390 (13)	0.0025 (10)	0.0093 (10)	-0.0032 (10)
C11	0.0436 (13)	0.0427 (13)	0.0409 (14)	0.0002 (11)	0.0112 (11)	-0.0011 (11)
C4	0.0471 (14)	0.0448 (15)	0.0462 (14)	-0.0043 (11)	0.0152 (11)	0.0055 (11)
C12	0.0495 (14)	0.0439 (14)	0.0389 (13)	-0.0055 (11)	0.0126 (11)	-0.0008 (11)
C5	0.0442 (15)	0.0590 (18)	0.0696 (18)	-0.0090 (13)	0.0031 (13)	0.0087 (14)
C6	0.0475 (16)	0.0624 (18)	0.079 (2)	0.0068 (14)	0.0109 (14)	0.0181 (16)
C3	0.0512 (15)	0.0476 (16)	0.0530 (16)	0.0020 (12)	0.0020 (12)	0.0010 (12)

## supplementary materials

---

C7	0.0675 (18)	0.0476 (15)	0.0478 (15)	0.0033 (14)	0.0220 (13)	0.0053 (12)
C10	0.0489 (15)	0.0541 (17)	0.0440 (15)	0.0022 (12)	0.0136 (11)	-0.0026 (12)
C8	0.0502 (15)	0.0654 (18)	0.0446 (15)	-0.0103 (13)	0.0179 (12)	0.0012 (13)
C9	0.0538 (15)	0.0616 (17)	0.0471 (15)	-0.0036 (13)	0.0224 (12)	-0.0070 (13)
C2	0.0629 (17)	0.0517 (17)	0.0518 (16)	-0.0027 (13)	0.0017 (13)	-0.0031 (13)
C14	0.111 (3)	0.0483 (17)	0.110 (3)	-0.0121 (17)	0.058 (2)	-0.0059 (18)
C15	0.126 (3)	0.0514 (18)	0.096 (2)	-0.0232 (18)	0.065 (2)	-0.0066 (17)
C1	0.166 (4)	0.060 (2)	0.101 (3)	0.015 (2)	-0.005 (3)	-0.026 (2)

### *Geometric parameters (Å, °)*

S2—C13	1.733 (2)	C6—C7	1.391 (4)
S2—C15	1.805 (3)	C6—H6	0.9300
S1—C13	1.732 (3)	C3—C2	1.377 (3)
S1—C14	1.793 (3)	C3—H3	0.9300
N1—C8	1.384 (3)	C7—C2	1.369 (3)
N1—C12	1.389 (3)	C10—C9	1.434 (3)
N1—C4	1.446 (3)	C8—C9	1.326 (3)
O2—C12	1.233 (3)	C8—H8	0.9300
O1—C10	1.240 (3)	C9—H9	0.9300
O3—C7	1.376 (3)	C2—H2	0.9300
O3—C1	1.412 (4)	C14—C15	1.429 (4)
C13—C11	1.383 (3)	C14—H14A	0.9700
C11—C12	1.459 (3)	C14—H14B	0.9700
C11—C10	1.466 (3)	C15—H15A	0.9700
C4—C3	1.366 (3)	C15—H15B	0.9700
C4—C5	1.376 (3)	C1—H1A	0.9600
C5—C6	1.371 (4)	C1—H1B	0.9600
C5—H5	0.9300	C1—H1C	0.9600
C13—S2—C15	95.41 (12)	O1—C10—C9	122.5 (2)
C13—S1—C14	96.14 (12)	O1—C10—C11	121.6 (2)
C8—N1—C12	121.5 (2)	C9—C10—C11	116.0 (2)
C8—N1—C4	119.61 (19)	C9—C8—N1	123.4 (2)
C12—N1—C4	118.88 (19)	C9—C8—H8	118.3
C7—O3—C1	117.8 (2)	N1—C8—H8	118.3
C11—C13—S1	121.55 (18)	C8—C9—C10	121.5 (2)
C11—C13—S2	123.24 (18)	C8—C9—H9	119.3
S1—C13—S2	115.21 (13)	C10—C9—H9	119.3
C13—C11—C12	118.8 (2)	C7—C2—C3	120.0 (2)
C13—C11—C10	120.5 (2)	C7—C2—H2	120.0
C12—C11—C10	120.8 (2)	C3—C2—H2	120.0
C3—C4—C5	120.0 (2)	C15—C14—S1	110.6 (2)
C3—C4—N1	119.8 (2)	C15—C14—H14A	109.5
C5—C4—N1	120.3 (2)	S1—C14—H14A	109.5
O2—C12—N1	119.6 (2)	C15—C14—H14B	109.5
O2—C12—C11	123.5 (2)	S1—C14—H14B	109.5
N1—C12—C11	116.9 (2)	H14A—C14—H14B	108.1
C6—C5—C4	119.6 (2)	C14—C15—S2	111.8 (2)
C6—C5—H5	120.2	C14—C15—H15A	109.3

C4—C5—H5	120.2	S2—C15—H15A	109.3
C5—C6—C7	120.6 (2)	C14—C15—H15B	109.3
C5—C6—H6	119.7	S2—C15—H15B	109.3
C7—C6—H6	119.7	H15A—C15—H15B	107.9
C4—C3—C2	120.6 (2)	O3—C1—H1A	109.5
C4—C3—H3	119.7	O3—C1—H1B	109.5
C2—C3—H3	119.7	H1A—C1—H1B	109.5
C2—C7—O3	125.1 (3)	O3—C1—H1C	109.5
C2—C7—C6	119.2 (2)	H1A—C1—H1C	109.5
O3—C7—C6	115.8 (2)	H1B—C1—H1C	109.5

*Hydrogen-bond geometry* (Å, °)

<i>D</i> —H... <i>A</i>	<i>D</i> —H	H... <i>A</i>	<i>D</i> ... <i>A</i>	<i>D</i> —H... <i>A</i>
C8—H8...O2 <sup>i</sup>	0.93	2.42	3.259 (3)	150
C14—H14a...O1 <sup>ii</sup>	0.97	2.685	3.475 (4)	139
C14—H14b...O1 <sup>iii</sup>	0.97	2.709	3.513 (4)	141

Symmetry codes: (i)  $x+1/2, -y+1/2, z-1/2$ ; (ii)  $x-1, y, z$ ; (iii)  $-x+1, -y, -z+2$ .

Fig. 1

